



Center for School, Health and Education

Public Health Capacity Building Assistance for SBHC Leaders  
A CDC Funded Learning Series

Module # 1- Social Determinants of Health

## School Based Health Centers and the Social Determinants of Health

Michael O. Royster, MD, MPH  
Vice President, Institute for Public Health Innovation  
Center for School, Health and Education at APHA  
January 12, 2015


---

---

---

---

---


---

---

---

### Guiding Questions

1. What are the major health problems you address among the clients you see in school-based health clinics
2. What are the causes of those problems?
3. What are the causes of *those* causes?
4. What are the opportunities for SBHCs to address the causes of the causes?




---

---

---

---

---

---

---

---

### Case Study- The Story of Myra

---

---

---

---

---

---

---

---



---

---

---

---

---

---

---

---



---

---

---

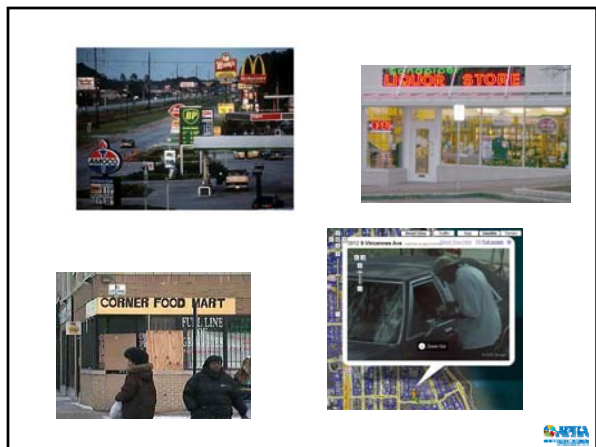
---

---

---

---

---



---

---

---

---

---

---

---

---



---

---

---

---

---

---

---

---



---

---

---

---

---

---

---

---



---

---

---

---

---

---

---


---

**Myra's Health**

**Currently at increased risk for:**

- Obesity
- Poor oral health
- Asthma
- Communicable diseases
- Injuries/abuse
- Low self-esteem, depression, anxiety
- Type II diabetes
- Early sexual activity and associated risks
- Legal and illegal substance abuse
- Other behavioral and social risks (gangs, aggression, victimization, social isolation, etc.)

Adapted from George A. Kaplan, PhD., 2007




---

---

---

---

---

---

---

---

---


---

**Myra's Health**

**Future increased risks:**

- Teen pregnancy
- Low birth weight & infant mortality
- Obesity
- Musculoskeletal disorders and mobility limitations
- Low self-esteem, depression, anxiety
- Abuse (sexual, physical, psychological)
- Cardiovascular disease
- Diabetes complications
- Lung cancer, cervical cancer, breast cancer mortality
- Behavioral and social (illegal activities, victimization, adverse occupational trajectories, etc.)
- Continued cycle of poverty, poor health, lost potential
- Shortened life expectancy

Adapted from George A. Kaplan, PhD., 2007




---

---

---

---

---

---

---

---

---

---

**What is putting Myra's health at risk?**

- Healthcare access and quality
- Health behaviors
- Social, economic, and environmental factors (SDOH)

"The complex, integrated, and overlapping social structures and economic systems that include the social environment, physical environment, and health services and structural and societal factors that are responsible for most health inequities. SDOH are shaped by the distribution of money, power and resources which are themselves influenced by policy choices."- Centers for Disease Control and Prevention




---

---

---

---

---

---

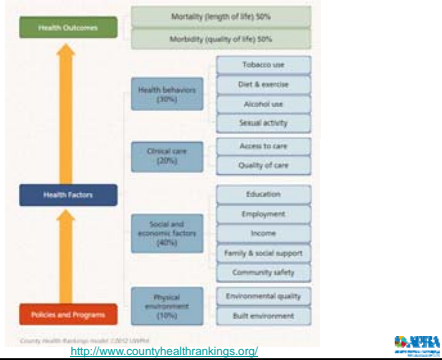
---

---

---

---

### Robert Wood Johnson Foundation, County Health Rankings, 2014




---

---

---

---

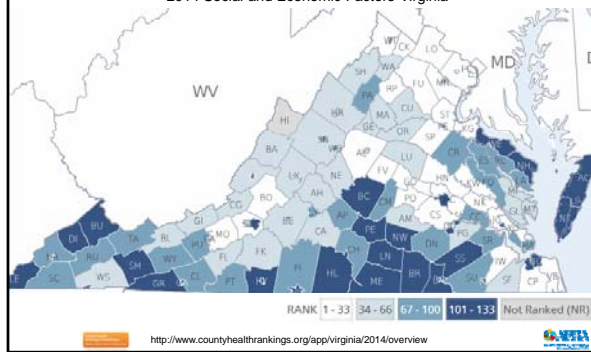
---

---

---

---

### RWJF County Health Rankings 2014 Social and Economic Factors-Virginia




---

---

---

---

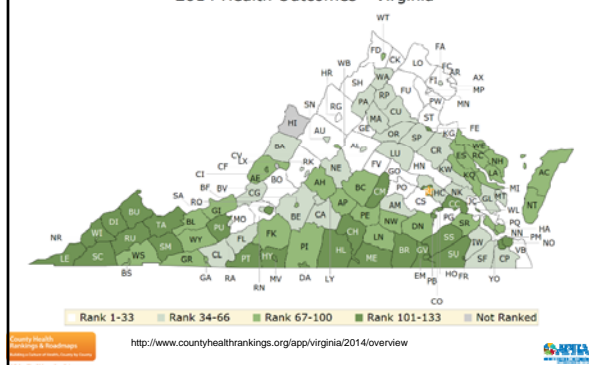
---

---

---

---

### RWJF County Health Rankings 2014 Health Outcomes - Virginia




---

---

---

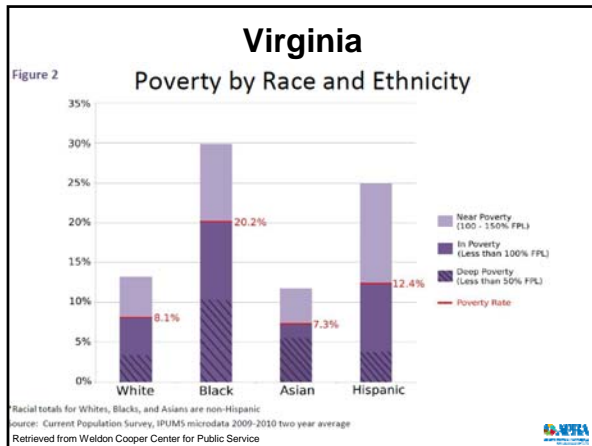
---

---

---

---

---




---

---

---

---

---

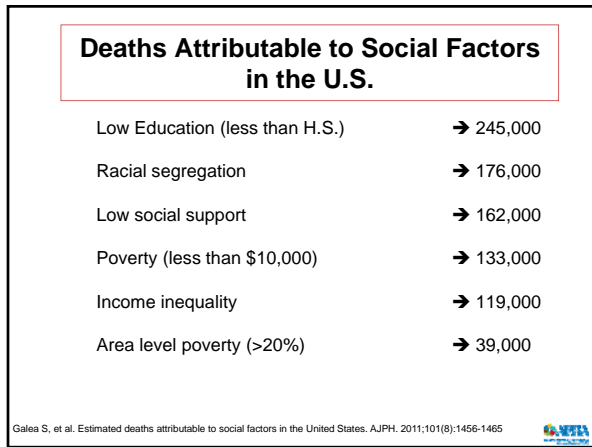
---

---

---

---

---




---

---

---

---

---

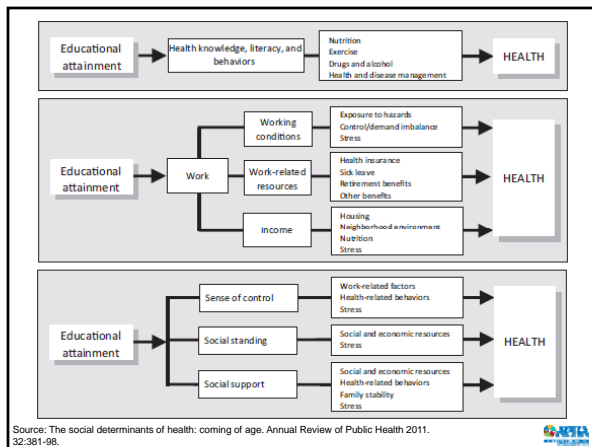
---

---

---

---

---




---

---

---

---

---

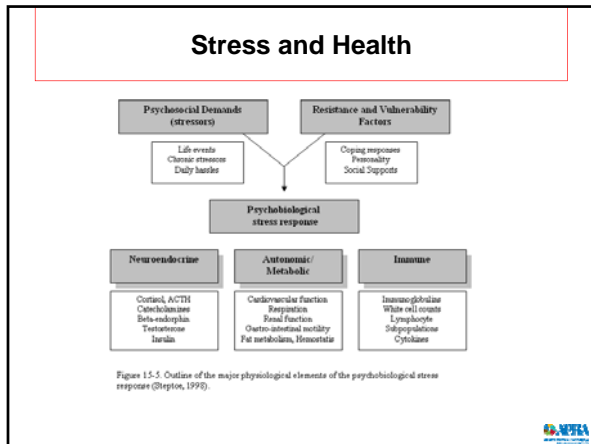
---

---

---

---

---




---

---

---

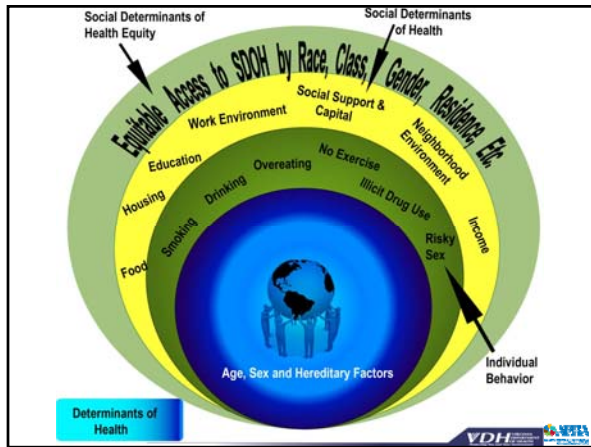
---

---

---

---

---




---

---

---

---

---

---

---

---

### Definitions

- Health Disparity**  
 A population where there is a significant disparity [difference] in the overall rate of disease incidence, prevalence, morbidity, mortality, or survival rates in the population as compared to the health status of the general population  
- Minority Health and Health Disparities Research and Education Act, 2000
- Health Inequity**  
 Disparities in health [or health care] that are systematic, avoidable and considered unfair or unjust  
- Whitehead, M. and Whitehead, The concepts and principles of equity and health. Health Promotion International, 1991, 6(3): p. 217.

---

---

---

---

---

---

---

---

## Health Equity

When all people have "the opportunity to 'attain their full health potential' and no one is 'disadvantaged from achieving this potential because of their social position or other socially determined circumstance'.

Source: Braveman, P.A., Monitoring equity in health and healthcare: a conceptual framework. *Journal of health, population, and nutrition*, 2003, 21(3): p. 161.



---

---

---

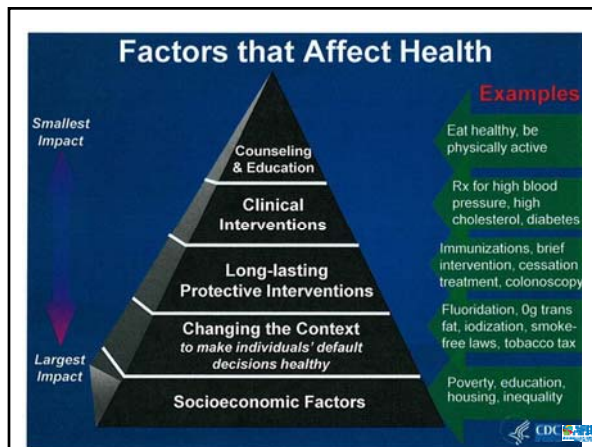
---

---

---

---

---



---

---

---

---

---

---

---

---

Look upstream to find the causes of the causes!



---

---

---

---

---

---

---

---



## Presenter's Bio



Dr. Royster serves as Vice President the Institute for Public Health Innovation (IPHI), which is the official public health institute that serves Maryland, Washington, D.C., and Virginia. Prior to joining IPHI, Dr. Royster was the Director of the Virginia Department of Health (VDH), Office of Minority Health and Health Equity (OMHHE). Prior to this position, Dr. Royster was the Director of the Crater Health District headquartered in Petersburg, Virginia.

He is board certified in Public Health and General Preventive Medicine and he is a fellow of the American College of Preventive Medicine. In addition, he is a member of the American Public Health Association, and is President-elect of the Virginia Public Health Association.



---

---

---

---

---

---

---

---

Center for  
School,  
Health and  
Education

## Thank You



---

---

---

---

---

---

---

---